



Market Indicators

TOP GAINER	%	TOP LOSER	%
RANBAXY	6.43	JINDALSTEL	(4.29)
LUPIN	3.09	DLF	(3.04)
BHEL	2.43	AXISBANK	(2.99)
GAIL	2.35	RELINFRA	(2.47)
BHARTIARTL	2.26	TATAPOWER	(2.20)

Broder Indices

Index	Closing Value	Change in (Pts)	Change (%)
MID CAP	6050.08	(22.47)	(0.37)
SMALL CAP	5747.95	(5.49)	(0.10)
IPO	1409.52	(9.10)	(0.64)

Sectoral Indices

AUTO	10831.60	(83.07)	(0.76)
BANKEX	13278.44	(104.14)	(0.78)
CD	6256.79	47.85	0.77
CG	9307.40	(56.15)	(0.60)
FMCG	6590.89	(3.36)	(0.05)
HC	9000.59	46.92	0.52
IT	6114.98	(39.89)	(0.65)
METAL	7867.55	(38.70)	(0.49)
OIL & GAS	8948.34	(90.93)	(1.01)
POWER	1660.15	(7.38)	(0.44)
PSU	6187.37	(65.85)	(1.05)
REALTY	1562.20	(28.36)	(1.78)
TECK	3647.02	(15.97)	(0.44)

Currency Movement

USDINR	59.41	0.27↑
EURINR	77.61	0.54↑
GBPINR	90.38	0.33↑
JPYINR	59.53	0.05↑

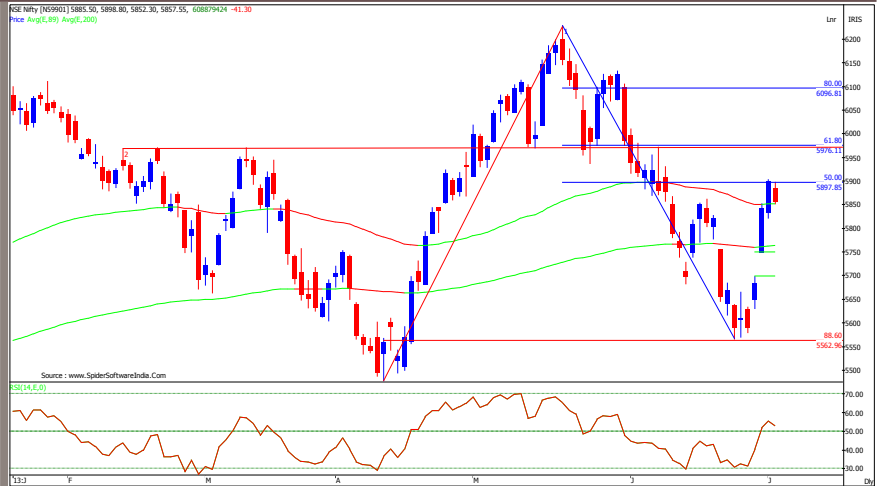
Market Breadth

Exchange	Advances	Declines	Unchanged
BSE	1120	1231	144
NSE	632	735	86

MARKET STATISTICS

ACTION	FII (₹) Cr.	DII (₹) Cr.
CASH BUY	2301.07	993.01
CASH SELL	2344.27	1118.34
(Provisional)	(43.20)	(125.33)

FII Derivatives	Buy (Cr.)	(Sell Cr.)	Net (Cr.)
Index Futures	1160.47	1314.59	(154.12)
Index Options	8294.91	9093.50	(798.59)
Stock Futures	1836.79	1750.00	86.79
Stock Options	782.10	823.71	(41.61)
Total			(907.53)



NIFTY OUTLOOK

Yesterday Nifty opened with downward gap of 13.35 points and made a high of 5898.80 in the initial trade, the profit booking witnessed which dragged down the indices which snapped the three day rally and Nifty closed at 5857.55 with loss of 41.30 points.

- ◆ Yesterday' price action on daily chart has formed small bear candle with formation of inside day and pause momentum at 5898 which is 50% retracement level from the entire decline from 6229 - 5566. The Nifty closed above the 89 days EMA (5851) which positive sign.
- ◆ The strong bullish gap area formed in last Friday's trade between 5749 - 5682 is seen as an important technical support for ongoing pullback rally. The index vaulted past its 200 day EMA 5763 with this rising gap and throwbacks from current levels will remain insulated buying support around the 200 day EMA 5762, which confluence with the upper band of Friday's rising gap area of 5749 - 5682
- ◆ On the higher side, we expect the index facing stiff resistance of recent breakdown area of 5970 being the neckline of the bearish Head & Shoulder pattern formed during the May 2013 rally which coincide with the 61.80% retracement from the entire decline from 6229 - 5566. A triumph above the previous breakdown area of 5970 could propel the index towards 6100 odd levels in the near term being the 80% retracement of the May-June fall (6229 to 5566)
- ◆ We expect the index to post a meaningful retracement to the May - June decline from 6229 to 5577 in the near term. Since September 2012, we have observed each major directional move in previous leg to April - May (5477 - 6229) from getting retraced by 88.60% (5562). And therefore, going by the historical tendency, the 80% retracement of the recent down leg from May 2013 high of 6229 to June low of 5566 projects potential upside towards 6100 odd levels in the near term.

For today trend deciding level for Nifty placed at 5870, if Nifty trade above this level then it may go up to 5920 - 5938 - 5958 level. However if Nifty trade below 5870 then it may find immediate support at 5853 level any violation of such support would signal further decline up to 5840 - 5823 level.

Indian Index Movement

MOVEMENT	SENSEX	NIFTY	SMA	SENSEX	NIFTY
OPEN	19573.93	5885.50	5 Days	19173	5774
HIGH	19589.14	898.80	20 Days	19124	5777
LOW	19442.75	5852.30	60 Days	19392	5877
CLOSE	19463.82	5857.55	100 Days	19314	5847
CHANGE IN PTS	(113.57)	(41.30)	200 Days	19216	5826
CHANGE IN %	(0.58)	(0.70)	260 Days	18787	5696

*Source: BSE, NSE, BI, Capital Market & rbi.org.in



TECH PICK

SYMBOL : ITC **CMP: 225**
ACTION : BUY
RANGE : 325 - 315
STOPLOSS : 300
TARGET : 345 & 358

Exhibit 2 : ITC - Daily Chart



ITC has been in a secular uptrend since 2009 forming higher high and higher low on all degree (Daily, Weekly and Monthly). After making lifetime high of 351.50 on May 31, 2013 the stock price seen corrective decline and pause near 311 - 318 range, and takes support at the ascending trend line drawn with adjoining two significant high of October 2012 (286) and February 2013 (298), earlier such trend line act as a resistance till April 2013 and after breakout of such supply line ITC has made strong upmove. As per the change of Polarity rule such supply line has reverse its role and now act as a demand line.

The corrective decline from the all time high of 351.50 to 311 was in well defined declining channel. The recent upmove in ITC price register breakout from the falling channel and we expect that stock price to resume the northwards journey toward the 114.60% retracement from the recent down leg (351 - 311). The most interesting observation is that the stock price has not given significant downward move below 89 days EMA, currently it placed at 312

Looking to above technical evidence, we advised to Buy at Cmp 325 or decline upto 315 with Stoploss of 300 for Target of 345 & 358



Symbol	PIVOT TABLE			Simple Moving Average				
	S2	S1	Pivot Point	R1	R2	5 Days	20 Days	55 Days
Sensex	19352	19408	19499	19554	19645	19173	19124	19485
Nifty	5823	5840	5870	5887	5916	5774	5777	5907
Bank Nifty Future	11502	11567	11667	11733	11833	11464	11721	12284
Nifty future	5827	5843	5866	5883	5906	5772	5780	5912
NIFTY COMPONENTS								
ACC	1197	1216	1229	1247	1261	1210	1203	1217
AMBUJACEM	184	185	187	188	190	184	180	183
ASIANPAINT	4623	4650	4693	4720	4763	4612	4552	4643
AXISBANK	1272	1290	1323	1341	1373	1301	1303	1405
BAJAJ-AUTO	1858	1886	1928	1955	1998	1877	1806	1817
BANKBARODA	574	582	590	598	605	578	602	644
BHARTIARTL	287	295	300	308	314	290	290	298
BHEL	171	177	181	188	192	173	177	188
BPCL	365	368	373	377	382	361	361	387
CAIRN	288	292	296	300	305	288	289	293
CIPLA	390	394	396	400	402	391	382	395
COALINDIA	292	296	300	303	307	297	304	308
DLF	178	181	185	188	192	180	185	214
DRREDDY	2216	2240	2264	2288	2312	2200	2157	2073
GAIL	313	323	329	338	344	313	303	322
GRASIM	2732	2765	2800	2833	2868	2780	2779	2890
HCLTECH	754	760	766	773	779	773	762	748
HDFC	859	867	880	888	901	859	839	860
HDFCBANK	645	651	660	665	674	653	655	675
HEROMOTOCO	1635	1658	1685	1709	1736	1666	1634	1643
HINDALCO	99	101	103	104	106	99	99	101
HINDUNILVR	582	585	588	591	594	588	591	570
ICICIBANK	1062	1071	1077	1086	1093	1055	1080	1117
IDFC	129	131	132	133	135	129	138	149
INDUSINDBK	462	469	474	481	486	465	479	484
INFY	2359	2381	2423	2445	2486	2447	2429	2365
ITC	321	323	325	327	329	324	328	323
JINDALSTEL	203	209	216	221	229	212	234	284
JPASSOCIAT	54	55	56	58	59	54	59	69
KOTAKBANK	706	711	718	723	729	710	739	737
LT	1403	1416	1433	1446	1463	1398	1407	1472
LUPIN	761	781	797	817	833	778	776	747
M&M	957	968	981	992	1005	956	959	951
MARUTI	1544	1561	1590	1608	1637	1558	1537	1604
NMDC	101	102	104	106	108	103	108	118
NTPC	143	144	146	148	150	144	147	151
ONGC	314	318	325	329	336	322	314	323
PNB	639	647	661	669	683	651	696	727
POWERGRID	109	110	112	113	114	110	109	111
RANBAXY	300	323	340	362	379	322	353	405
RELIANCE	854	863	877	886	901	851	813	810
RELINFRA	342	350	362	369	381	346	353	375
SBIN	1954	1972	2000	2019	2047	1954	1998	2139
SESAGOA	145	148	151	154	157	143	144	154
SUNPHARMA	984	996	1012	1024	1039	987	979	974
TATAMOTORS	279	283	286	289	292	280	290	294
TATAPOWER	85	86	87	88	89	85	84	90
TATASTEEL	276	279	283	286	289	273	278	297
TCS	1477	1489	1499	1510	1520	1488	1462	1462
ULTRACEMCO	1892	1907	1923	1938	1954	1877	1855	1908

URJA INVESTMENT PTE. LTD.

Private & Confidential



Economic Calendar

Impact	IST	Location	Indicator	Forecast	Previous	Actual
Medium	3:15	USA	FOMC Member Powell Speaks			
Low	4:31	Britain	BRC Shop Price Index (Y o Y)		-0.10%	
Low	6:30	China	Non-Manufacturing PMI		54.3	
Medium	12:45	Euro Zone	Spanish Services PMI	47.8	47.3	
Medium	13:15	Euro Zone	Italian Services PMI	47.1	46.5	
Low	13:30	Euro Zone	Final Services PMI	48.6	48.6	
High	14:00	Britain	Services PMI	54.6	54.9	
Medium	14:00	Britain	BOE Credit Conditions Survey			
Medium	14:30	Euro Zone	Retail Sales (M o M)	0.40%	-0.50%	
Low	17:00	USA	Challenger Job Cuts (Y o Y)		-41.20%	
High	17:45	USA	ADP Non-Farm Employment Change	161K	135K	
High	18:00	USA	Trade Balance	-40.3B	-40.3B	
High	18:00	USA	Unemployment Claims	345K	346K	
High	19:30	USA	ISM Non-Manufacturing PMI	54.3	53.7	
Medium	19:30	USA	Treasury Sec Lew Speaks			
Medium	20:00	USA	Crude Oil Inventories		0.0M	
Low	21:30	USA	Natural Gas Storage		95B	



DISCLAIMER: This document is not for public distribution and has been furnished to you solely for your information and must not be reproduced or redistributed to any other person. Persons into whose possession this document may come are required to observe these restrictions.

The information and views in this report, our website & all the service we provide are believed to be reliable, but we do not accept any responsibility (or liability) for errors of fact or opinion. Users have the right to choose the products that suits them the most. Investment in Stocks has its own risks. Sincere efforts have been made to present the right investment perspective. The information contained herein is based on analysis and up on sources that we consider reliable. We, however, do not vouch for the accuracy or the completeness thereof. This material is for personal information and we are not responsible for any loss Incurred based upon it & take no responsibility whatsoever for any financial profits or loss which may arise from the recommendations above.

Recipients of this material should rely on their own investigations and take their own professional advice. Each recipient of this document should make such investigations as it deems necessary to arrive at an independent evaluation of an investment in the securities of companies referred to in this document including the merits and risks involved), and should consult their own advisors to determine the merits and risks of such an investment. Price and value of the investments referred to in this material may go up or down. Past performance is not a guide for future performance. Certain transactions - futures, options and other derivatives as well as non-investment grade securities - involve substantial risks and are not suitable for all investors. Reports based on technical analysis centers on studying charts of a stock's price movement and trading volume, as opposed to focusing on a company's fundamentals and as such, may not match with a report on a company's fundamentals.
All the Rights are reserved.

Contact Us: research@urjatrade.com

Web: www.LAAVLE.com

Registration: NSE - CASH INB230696132 | NSE - FO INF230696132 | BSE - CASH INB010696137

URJA INVESTMENT PTE. LTD.

Private & Confidential